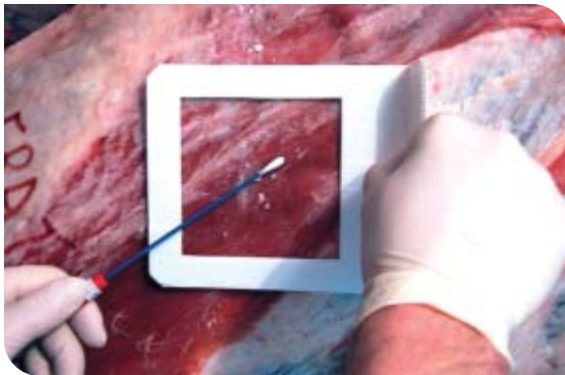


# SRK471

## Kit For Bacteriological Sampling of Carcasses Designed in Accordance with EC Directive 471/2001/EC

A convenient and ready to use sampling kit that can be implemented as a part of your regular hygiene surveillance procedures and HACCP management.

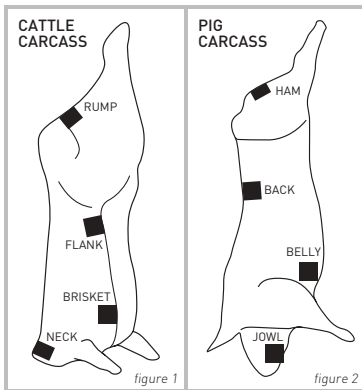


### COLLECTION AND TRANSPORT SYSTEM FOR ANALYSIS OF TOTAL VIABLE COUNTS AND ENTEROBACTERIACEA

As indicated in the Official Journal of the European Community L165/48 and according to the European Directive 2001/471/EC, the operators of meat establishments must conduct regular checks on the general hygiene conditions of production in their establishments. The required microbiological controls will allow the marketing and place on the market of fresh meat. Samples should be taken from those sites where risk of microbiological contamination is most likely to occur and according to a well defined procedure.



1. Open the sterile pouch and remove the sampling swabs.
2. Identify the location and number of surfaces to be sampled. The sampling area for swabbing should cover at least 100 cm<sup>2</sup> per sampling site.
3. Following the 471/2001/EC protocol **wet swabs** must be pre-moistened for at least 5 seconds in the solution provided in the screw capped container.



The following sites will usually be appropriate for process control:

- Cattle:** neck, brisket, flank, & rump (fig. 1)  
**Sheep, Goat:** flank, thorax lateral, brisket, & breast  
**Pig:** back, jowl (or cheek), hind limb medial (ham), & belly (fig. 2)  
**Horse:** flank, brisket, back, & rump

4. Rub **wet swabs** initially vertically, then horizontally, then diagonally not for less than 20 seconds across the entire meat surface delineated by a template. As much pressure as possible should be used.
5. After using the **wet swab**, the same sampling procedure should be repeated with a **dry swab**.
6. Samples should be stored refrigerated at 4°C until examination. Samples should be examined within 24 hours after sampling.



## ORDERING INFORMATION

Catalog No.	Description	Packaging
938C	SRK 471 Sampling Kit - comprising 1 screw cap tube filled with 10mL of diluent (0.1% Peptone + 0.85% NaCl) and 8 plain Dacron tip swabs with blue color coded applicator shafts.	6 x 25 kit
T2905C	10 x 10cm plastic square sampling templates	5pcs / pouch 6 x 50 pouches
T2906C	5 x 4cm plastic square sampling templates	5pcs / pouch 6 x 50 pouches

A complete kit for hygiene monitoring control of surfaces is also available from Copan



Copan Diagnostics Inc.  
 2175 Sampson Ave., Suite 124  
 Corona, California 92879 USA  
 Toll Free: (800)216-4016 US & Canada  
 Tel: (909)549-8793 • Fax: (909)549-8850  
 E-Mail: copanswabs@aol.com



Check out our website @ [www.copaninnovation.com](http://www.copaninnovation.com)

Copan Italia S.p.a.  
 Via F. Perotti, 10  
 25125 Brescia, Italy  
 Tel: (+39) 030 268 7211  
 Fax: (+39) 030 268 7250  
 E-Mail: [customercare@copanitalia.com](mailto:customercare@copanitalia.com)